

Doxiadis Associates

**DAMASCUS MASTER PLAN
SECONDMENT OF SERVICES TO THE GENERAL COMPANY FOR ENGINEERING**

The project was conceived in 1994 as a framework within which public and private interventions in the Syrian Capital were to be coordinated. Doxiadis Associates undertook to provide the project management of a 30-member team of Syrian scientists from the Public Consulting Engineering Company (GCEC) for the elaboration of Damascus Structure Plan and Regional Development Program for 2020.

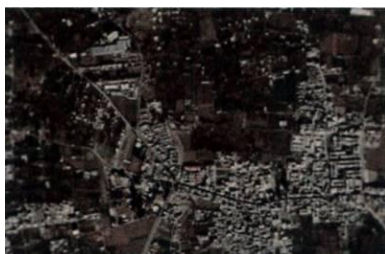


The tasks comprised an initial process of verification and updating of present conditions in a G.I.S. data bank. These findings allowed for the identification of shortcomings, deficiencies, conflicts and opportunities of urban and regional uses and resources. Finally the plan provided for a pattern of sustainable development and economic growth with an emphasis on environmental protection



Work followed five stages of elaboration: from traffic counts and surveys to the design of satellite towns to alleviate in-migration to the city.

Preceded by an interim report on the existing condition in Damascus and its surrounding region, the final report identified future expansion areas and major regional land uses. Accompanied with the relevant cartography work, alternative proposals for the region were illustrated according to a set of criteria and three possible expansion scenarios were elaborated.



DATA ON OVERALL PROJECT

Name of Client <i>General Company for Engineering Consultandy - Syria</i>	Start Date <i>05/1994</i>	Project Value in 01/2009 prices (US \$)
Project Location within Country <i>Damascus - Syria</i>	Completion Date <i>12/1997</i>	Value of Services in 01/2009 prices (US \$) 110,000

13, AEGIDON & SENEKA STR. 145 64 NEW KIFISSIA, GREECE - TEL. +302106246300 - FAX +302106246399 - E-MAIL doxiadis@doxiadis.com